

## TECHNO ELECTRO POWER MAIN PANEL & SMP SYSTEM

**TEP offers innovative solutions to meet customer needs in Power & Protection**

Techno Electro Power (TEP) Industrial SPC is an ISO 9001:2015 certified companies based in Kingdom of Bahrain.

TEP Industrial SPC is focused on manufacturing of L.V. Panels, Distribution Boards, Control Panels, Cable Trays, and PVC Electrical Conduits & Accessories. All products are tested to international standards, (BS, KEMA). TEP continues to use technological innovation to manufacture products with lower cost and better quality.

TEP Industrial SPC aspires to become a Premier manufacturer and supplier of Electrical products and materials throughout the EMEA.






## About Us

TEP Industrial SPC was established in 2013 and is head quartered in Bahrain is pleased to say that we have been supplying excellent service of Electrical goods and products business in to the industry since 2013. In a short span of 7 years TEP Industrial SPC has created good market reputation and is instrumental in providing top grade and cost effective cabling and switchgear related solutions to clients in Bahrain.

Poweron Trading Co. WLL is the trading arm of TEP Industrial SPC. The trading firm is engaged in supply of products manufactured by TEP Industrial SPC and is also a leading trader of Electrical Items, Cable Management Systems, Lights & Light Fittings and all types of LV Cables in Bahrain.

**Warranty Policy:** warranted against defects arising out of manufacturing processes or use of defective raw materials for a period of 18 months from the date of supply or 12 months from the date of installation whichever is earlier. The company reserves the right to either replace or repair the defective items after ascertaining the facts through a detailed service report on usage of our products in normal conditions.

## Contents

-  **MCCB DISTRIBUTION BOARDS**
-  **BUSBAR CHAMBER**
-  **MAIN PANEL**

## SMP & MP

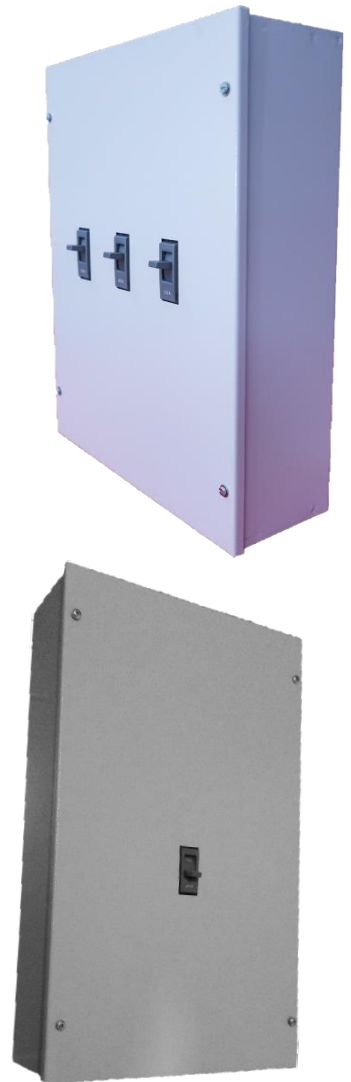
### Salient Features

- Aesthetically designed in compliance with latest standards
- SPN, TPN MCB Distribution Board.
- Degree of protection IP31 as Standard.
- 42, IP43 & 55 available (non-Standard sizes)
- Powder coated - Corrosion & scratch resistance
- Detachable gland plate (optional)
- Adequate knock-outs on all sides
- Generous wiring space
- Clear circuit identification
- Ambient temperature 55 Degree



### Technical Details

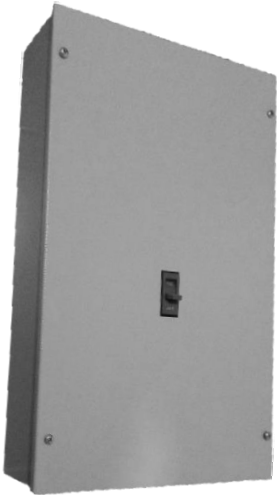
Voltage	: 240V/415V AC
Die Electric Strength	: 2.5kV RMS AC for 1min



## Busbar Chamber

### Salient Features

- IP30 protection
- Standard color RAL-7035.
- Surface or Flush mounted Covers.
- Generous wiring space, adequate for cable glands
- Superior powder coated finish for better protection against heat & dust (Powder coating thickness of more than 60 microns)
- Detachable gland plates (OPTIONAL)
- With Copper busbar



### Product Name

**Busbar Chamber**

### Technical Details –With Incomer Busbar Spreader

(As per customer cable size) Optional

Description	Fixed Cover
	Code Ref.
60A	
100A	
125A	
200A	
250A	
300A	
400A	
630A	
800A	

## Sub-Main Distribution Panels

### Salient Features



- IP30 protection
- Standard color RAL-7035.
- Surface or Flush mounted Covers.
- Generous wiring space, adequate for cable glands
- Superior powder coated finish for better protection against heat & dust (Powder coating thickness of more than 60 microns)
- Detachable gland plates (OPTIONAL)
- With Copper busbar

### Product Name

**Sub-Main Distribution Panel**

### Technical Details –With Incomer Busbar Spreader

(As per customer cable size) Optional

Description	Fixed Cover
	Code Ref.
2 WAY 60+60+60A	
2 WAY 100+60+60A	
2 WAY 100+60+60A With 1 NO ELCB	
3 WAY 100+60+60+60A	
3 WAY 125+60+60+60A	
3 WAY 200+60+60+60A	
4 WAY 100+60+60+60+60A	
4 WAY 200+60+60+60+60A	



## Main Distribution Panels

### Salient Features



- IP30 protection
- Standard color RAL-7035.
- Generous wiring space, adequate for cable glands
- Superior powder coated finish for better protection against heat & dust (Powder coating thickness of more than 60 microns)
- Detachable gland plates (OPTIONAL)
- Other combination of incomer & feeders available.
- With Copper busbar assembly up to 3000A.

### Product Name

**Main Distribution Panel**

#### Technical Details:

**With Incomer Busbar Spreader (as per customer Cable Size) (Optional)**

Product upgradation is a continuous process. The data given is subject to Change without any prior notice. Please contact your nearest TEP Sales office for the latest product information.

We are committed to continuous development and improvement of our products and the specifications are subject to change without notice. For product availability and latest prices, please contact TEP Sales Team.

For any further information, visit us at <http://www.tepindustrial.com>