

## TECHNO ELECTRO POWER CABLE MANAGEMENT SYSTEM

**TEP offers innovative solutions to meet customer needs in Power & Protection**

Techno Electro Power (TEP) Industrial SPC is an ISO 9001:2015 certified companies based in Kingdom of Bahrain.

TEP Industrial SPC is focused on manufacturing of L.V. Panels, Distribution Boards, Control Panels, Cable Trays, and PVC Electrical Conduits & Accessories. All products are tested to international standards, (BS, KEMA). TEP continues to use technological innovation to manufacture products with lower cost and better quality.

TEP Industrial SPC aspires to become a Premier manufacturer and supplier of Electrical products and materials throughout the EMEA.



## About Us

TEP Industrial SPC was established in 2013 and is head quartered in Bahrain is pleased to say that we have been supplying excellent service of Electrical goods and products business in to the industry since 2013. In a short span of 7 years TEP Industrial SPC has created good market reputation and is instrumental in providing top grade and cost effective cabling and switchgear related solutions to clients in Bahrain.

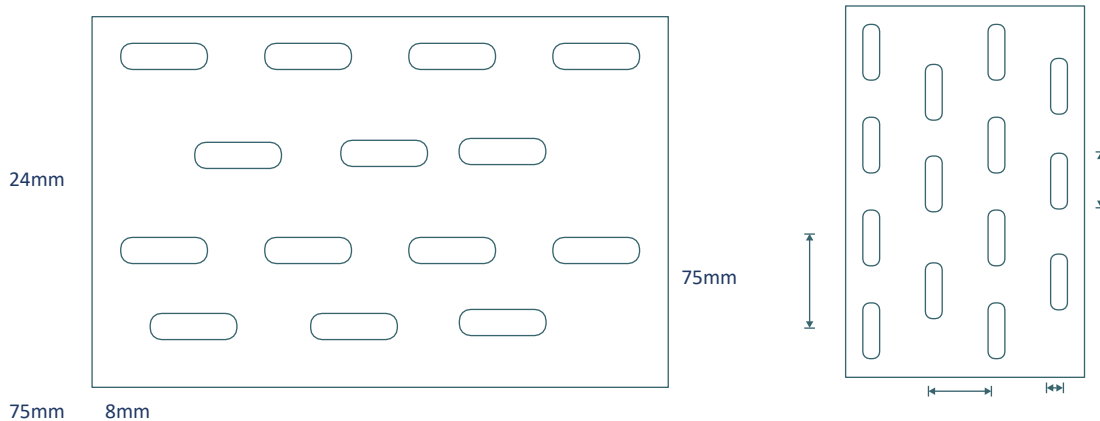
Poweron Trading Co. WLL is the trading arm of TEP Industrial SPC. The trading firm is engaged in supply of products manufactured by TEP Industrial SPC and is also a leading trader of Electrical Items, Cable Management Systems, Lights & Light Fittings and all types of LV Cables in Bahrain.

**Warranty Policy:** warranted against defects arising out of manufacturing processes or use of defective raw materials for a period of 18 months from the date of supply or 12 months from the date of installation whichever is earlier. The company reserves the right to either replace or repair the defective items after ascertaining the facts through a detailed service report on usage of our products in normal conditions.

## INDEX

» ORDERING CODE	5
» CABLETRAY	6
» CABLETRAY ACCESSORIES	7
» CABLETRUNKING	11
» CABLETRUNKING ACCESSORIES	12
» SUPPORT CHANNEL	14
» APPROVALS	15

### Slotting pattern Perforation Details



Techno Electro Power Cable Management System offers you a simple, inexpensive method of routing and supporting all types of light to heavy weight cables. Ideal for all types of commercial, industrial and government applications.

Available in different widths, heights, and lengths, complete line of fittings and accessories provide flexibility to meet installation requirements, also available in Hot Dip Galvanized Steel, built to BS EN standards.

## **Pre-Galvanized Zinc**

(Mill Galvanized, **Hot Dip Mill Galvanized** or **Continuous Hot Dip Galvanized**)

Pre-Galvanized steel is produced by coating coils of sheet steel with zinc by continuously rolling the material through molten zinc at the mills. This is also known as mill galvanized or hot dip mill galvanized. These coils are then slit to size and fabricated by roll forming, shearing, punching, or forming to produce pre-galvanized Cable Tray products (GI).

The G90 specification call for a coating of 90 ounces of zinc per square foot of steel. This results in a coating of 45 ounces per square foot on each side of the sheet. This is important when comparing this finish to hot dip galvanized after fabrication.

During fabrication, cut edge and welded areas are not normally zinc coated; however, the zinc near the uncoated metal becomes a sacrificial anode to protect the bare areas after short period of time.

To further insure a quality product, TPI welds all pre-galvanized Cable Trays with silicon bronze welding wire allowing only a small heat affected zone to be exposed. This small area quickly repairs itself by the same process as cut edges.

## **Hot Dip Galvanized After Fabrication**

**(Hot Dip Galvanized or Batch Hot Dip Galvanized)**

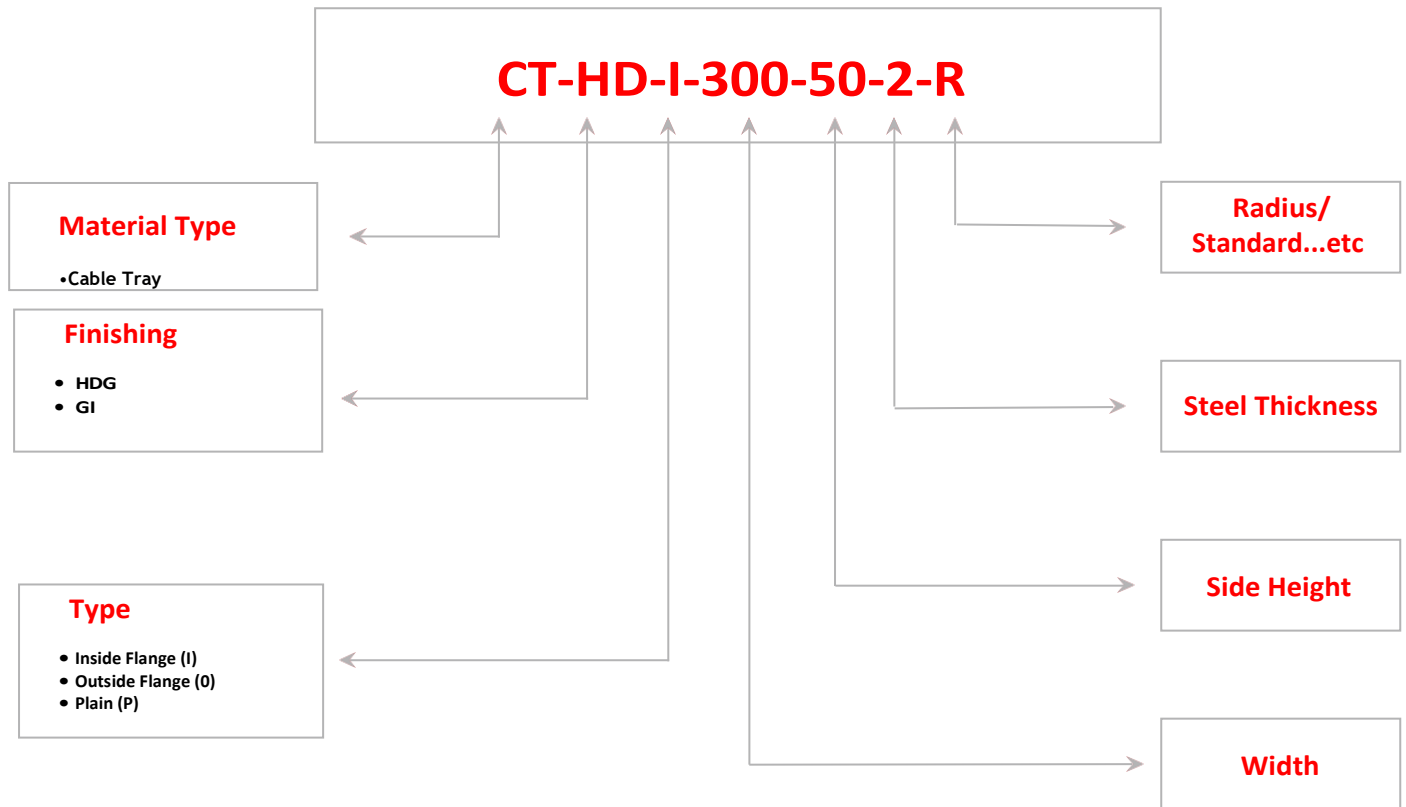
HotDipGalvanizedafterFabricationCableTrayproductsarefabricatedfromsteelandthencompletely immersed in a bath of molten zinc. A metallic bond occurs resulting in a zinc coating that completely coats all surfaces, including edges and welds.

Another advantage of this method is coating thickness. Cable Trays **Hot Dip Galvanized After Fabrication** have a minimum thickness in accordance to ASTM A123 and BS 1461 (updated standard of BS 729).

*The zinc thickness is controlled by several factors 2 of which are the amount of time each part is immersed in the molten zinc bath, as well as, the speed of dipping and removal.*

The layer of zinc which bonds to steel provides a dual protection against corrosion. It protects first as an overall barrier coating. If this coating happens to be scratched or gouged, zinc's secondary defense is called upon to protect the steel by galvanic action.

Hot Dip Galvanized after Fabrication is recommended for prolonged outdoor exposure and will protect steel for many years in most outdoor environments and in many aggressive industrial environments.



## Cable Tray Plain Type

COATING	TRAY TYPE	WIDTH	DEPTH	SHEET THICKNESS	LENGTH
HD/GI	CTP	50	50 / 25	1.0/1.2/1.5/2.0	2440/3000
HD/GI	CTP	75	75 /50 / 25	1.0/1.2/1.5/2.0	2440/3000
HD/GI	CTP	100	100/ 75 /50 / 25	1.0/1.2/1.5/2.0	2440/3000
HD/GI	CTP	150	100/ 75 /50 / 25	1.0/1.2/1.5/2.0	2440/3000
HD/GI	CTP	200	100/ 75 /50 / 25	1.0/1.2/1.5/2.0	2440/3000
HD/GI	CTP	225	100/ 75 /50 / 25	1.2/1.5/2.0	2440/3000
HD/GI	CTP	250	100/ 75 /50 / 25	1.2/1.5/2.0	2440/3000
HD/GI	CTP	300	100/ 75 /50 / 25	1.2/1.5/2.0	2440/3000
HD/GI	CTP	400	100/ 75 /50 / 25	1.5/2.0	2440/3000
HD/GI	CTP	450	100/ 75 /50 / 25	1.5/2.0	2440/3000
HD/GI	CTP	500	100/ 75 /50 / 25	1.5/2.0	2440/3000
HD/GI	CTP	600	100/ 75 /50 / 25	1.5/2.0	2440/3000
HD/GI	CTP	750	100/ 75 /50 / 25	2.00	2440/3000
HD/GI	CTP	800	100/ 75 /50 / 25	2.00	2440/3000
HD/GI	CTP	900	100/ 75 /50 / 25	2.00	2440/3000
HD/GI	CTP	1050	100/ 75 /50 / 25	2.00	2440/3000
HD/GI	CTP	1200	100/ 75 /50 / 25	2.00	1200

Light Duty is 1.0/1.2 mm Thickness  
Medium Duty is 1.5 mm Thickness Heavy  
Duty is 2.0/2.5 mm Thickness



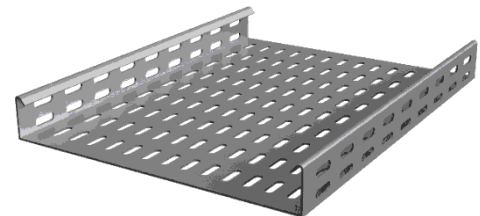
### Remarks

- \* Thickness is minimum recommended as per manufacturing standard.
- \* Heights available are standard; other heights are available as special request.
- \* Standard Couplers size is 180mm x side height of Tray.
- \* Standard Hardware M6 Bolts for Cable Tray with M6 Nuts and Washer.

## Cable Tray Inside Flange Type

COATING	TRAY TYPE	WIDTH	DEPTH	SHEET THICKNESS	LENGTH
HD/GI	CTI	75	75 /50 / 25	1.0/1.2/1.5/2.0	2440/3000
HD/GI	CTI	100	100/ 75 /50 / 25	1.0/1.2/1.5/2.0	2440/3000
HD/GI	CTI	150	100/ 75 /50 / 25	1.0/1.2/1.5/2.0	2440/3000
HD/GI	CTI	200	100/ 75 /50 / 25	1.0/1.2/1.5/2.0	2440/3000
HD/GI	CTI	225	100/ 75 /50 / 25	1.2/1.5/2.0	2440/3000
HD/GI	CTI	250	100/ 75 /50 / 25	1.2/1.5/2.0	2440/3000
HD/GI	CTI	300	100/ 75 /50 / 25	1.2/1.5/2.0	2440/3000
HD/GI	CTI	400	100/ 75 /50 / 25	1.5/2.0	2440/3000
HD/GI	CTI	450	100/ 75 /50 / 25	1.5/2.0	2440/3000
HD/GI	CTI	500	100/ 75 /50 / 25	1.5/2.0	2440/3000
HD/GI	CTI	600	100/ 75 /50 / 25	1.5/2.0	2440/3000
HD/GI	CTI	750	100/ 75 /50 / 25	2.00	2440/3000
HD/GI	CTI	800	100/ 75 /50 / 25	2.00	2440/3000
HD/GI	CTI	900	100/ 75 /50 / 25	2.00	2440/3000
HD/GI	CTI	1050	100/ 75 /50 / 25	2.00	2440/3000
HD/GI	CTI	1200	100/ 75 /50 / 25	2.00	1200

Light Duty is 1.0/1.2 mm Thickness  
Medium Duty is 1.5 mm Thickness Heavy  
Duty is 2.0/2.5 mm Thickness



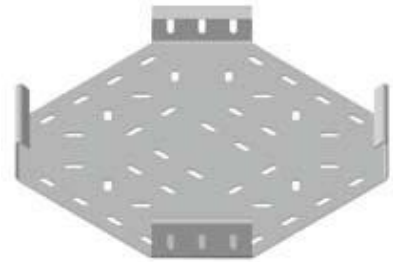
### Remarks

- \* Thickness is minimum recommended as per manufacturing standard.
- \* Heights available are standard; other heights are available as special request.
- \* Standard Couplers size is 180mm x side height of Tray.
- \* Standard Hardware M6 Bolts for Cable Tray with M6 Nuts and Washer.



## Cross Horizontal

COATING	TRAY TYPE	ACCESSORY	WIDTH	DEPTH	SHEET THICKNESS
HD/GI	CTI	CH	50	50 / 25	1.0/1.2/1.5/2.0
HD/GI	CTI	CH	75	75 /50 / 25	1.0/1.2/1.5/2.0
HD/GI	CTI	CH	100	100/ 75 /50 / 25	1.0/1.2/1.5/2.0
HD/GI	CTI	CH	150	100/ 75 /50 / 25	1.0/1.2/1.5/2.0
HD/GI	CTI	CH	200	100/ 75 /50 / 25	1.0/1.2/1.5/2.0
HD/GI	CTI	CH	225	100/ 75 /50 / 25	1.2/1.5/2.0
HD/GI	CTI	CH	250	100/ 75 /50 / 25	1.2/1.5/2.0
HD/GI	CTI	CH	300	100/ 75 /50 / 25	1.2/1.5/2.0
HD/GI	CTI	CH	400	100/ 75 /50 / 25	1.5/2.0
HD/GI	CTI	CH	450	100/ 75 /50 / 25	1.5/2.0
HD/GI	CTI	CH	500	100/ 75 /50 / 25	1.5/2.0
HD/GI	CTI	CH	600	100/ 75 /50 / 25	1.5/2.0
HD/GI	CTI	CH	750	100/ 75 /50 / 25	2.00
HD/GI	CTI	CH	800	100/ 75 /50 / 25	2.00
HD/GI	CTI	CH	900	100/ 75 /50 / 25	2.00
HD/GI	CTI	CH	1050	100/ 75 /50 / 25	2.00
HD/GI	CTI	CH	1200	100/ 75 /50 / 25	2.00



### Remarks

- \* Thickness is minimum recommended as per manufacturing standard.
- \* Heights available are standard; other heights are available as special request.
- \* Standard Couplers size is 180mm x side height of Tray.
- \* Standard Hardware M6 Bolts for Cable Tray with M6 Nuts and Washer.
- \* Model represents the inside flange type. Other flanges available upon request.
- \* Equal cross A=B=C=D=Width.
- \* Unequal cross A, B, C, D will be as per specification.



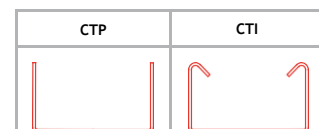
## Tee Horizontal

COATING	TRAY TYPE	ACCESSORY	WIDTH	DEPTH	SHEET THICKNESS
HD/GI	CTI/CTP	TH	50	50 / 25	1.0/1.2/1.5/2.0
HD/GI	CTI/CTP	TH	75	75 /50 / 25	1.0/1.2/1.5/2.0
HD/GI	CTI/CTP	TH	100	100/ 75 /50 / 25	1.0/1.2/1.5/2.0
HD/GI	CTI/CTP	TH	150	100/ 75 /50 / 25	1.0/1.2/1.5/2.0
HD/GI	CTI/CTP	TH	200	100/ 75 /50 / 25	1.0/1.2/1.5/2.0
HD/GI	CTI/CTP	TH	225	100/ 75 /50 / 25	1.2/1.5/2.0
HD/GI	CTI/CTP	TH	250	100/ 75 /50 / 25	1.2/1.5/2.0
HD/GI	CTI/CTP	TH	300	100/ 75 /50 / 25	1.2/1.5/2.0
HD/GI	CTI/CTP	TH	400	100/ 75 /50 / 25	1.5/2.0
HD/GI	CTI/CTP	TH	450	100/ 75 /50 / 25	1.5/2.0
HD/GI	CTI/CTP	TH	500	100/ 75 /50 / 25	1.5/2.0
HD/GI	CTI/CTP	TH	600	100/ 75 /50 / 25	1.5/2.0
HD/GI	CTI/CTP	TH	750	100/ 75 /50 / 25	2.00
HD/GI	CTI/CTP	TH	800	100/ 75 /50 / 25	2.00
HD/GI	CTI/CTP	TH	900	100/ 75 /50 / 25	2.00
HD/GI	CTI/CTP	TH	1050	100/ 75 /50 / 25	2.00
HD/GI	CTI/CTP	TH	1200	100/ 75 /50 / 25	2.00



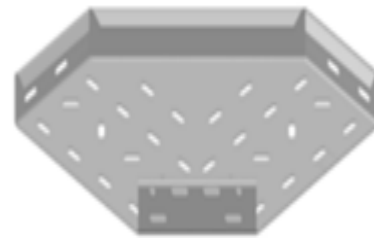
### Remarks

- \* Thickness is minimum recommended as per manufacturing standard.
- \* Heights available are standard; other heights are available as special request.
- \* Standard Couplers size is 180mm x side height of Tray.
- \* Standard Hardware M6 Bolts for Cable Tray with M6 Nuts and Washer.
- \* Model represents the inside flange type. Other flanges available upon request.
- \* Equal cross A=B=C=D=Width.
- \* Unequal cross A, B, C, D will be as per specification.



## Bend 90°

COATING	TRAY TYPE	ACCESSORY	WIDTH	DEPTH	SHEET THICKNESS
HD/GI	CTI/CTP	B90	50	50 / 25	1.0/1.2/1.5/2.0
HD/GI	CTI/CTP	B90	75	75 /50 / 25	1.0/1.2/1.5/2.0
HD/GI	CTI/CTP	B90	100	100/ 75 /50 / 25	1.0/1.2/1.5/2.0
HD/GI	CTI/CTP	B90	150	100/ 75 /50 / 25	1.0/1.2/1.5/2.0
HD/GI	CTI/CTP	B90	200	100/ 75 /50 / 25	1.0/1.2/1.5/2.0
HD/GI	CTI/CTP	B90	225	100/ 75 /50 / 25	1.2/1.5/2.0
HD/GI	CTI/CTP	B90	250	100/ 75 /50 / 25	1.2/1.5/2.0
HD/GI	CTI/CTP	B90	300	100/ 75 /50 / 25	1.2/1.5/2.0
HD/GI	CTI/CTP	B90	400	100/ 75 /50 / 25	1.5/2.0
HD/GI	CTI/CTP	B90	450	100/ 75 /50 / 25	1.5/2.0
HD/GI	CTI/CTP	B90	500	100/ 75 /50 / 25	1.5/2.0
HD/GI	CTI/CTP	B90	600	100/ 75 /50 / 25	1.5/2.0
HD/GI	CTI/CTP	B90	750	100/ 75 /50 / 25	2.00
HD/GI	CTI/CTP	B90	800	100/ 75 /50 / 25	2.00
HD/GI	CTI/CTP	B90	900	100/ 75 /50 / 25	2.00
HD/GI	CTI/CTP	B90	1050	100/ 75 /50 / 25	2.00
HD/GI	CTI/CTP	B90	1200	100/ 75 /50 / 25	2.00



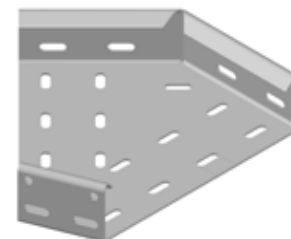
### Remarks

- \* Thickness is minimum recommended as per manufacturing standard.
- \* Heights available are standard; other heights are available as special request.
- \* Standard Couplers size is 180mm x side height of Tray.
- \* Standard Hardware M6 Bolts for Cable Tray with M6 Nuts and Washer.
- \* Model represents the inside flange type. Other flanges available upon request.



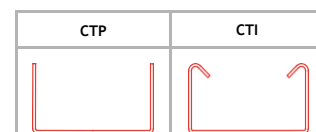
## Bend 45°

COATING	TRAY TYPE	ACCESSORY	WIDTH	DEPTH	SHEET THICKNESS
HD/GI	CTI/CTP	B45	50	50 / 25	1.0/1.2/1.5/2.0
HD/GI	CTI/CTP	B45	75	75 /50 / 25	1.0/1.2/1.5/2.0
HD/GI	CTI/CTP	B45	100	100/ 75 /50 / 25	1.0/1.2/1.5/2.0
HD/GI	CTI/CTP	B45	150	100/ 75 /50 / 25	1.0/1.2/1.5/2.0
HD/GI	CTI/CTP	B45	200	100/ 75 /50 / 25	1.0/1.2/1.5/2.0
HD/GI	CTI/CTP	B45	225	100/ 75 /50 / 25	1.2/1.5/2.0
HD/GI	CTI/CTP	B45	250	100/ 75 /50 / 25	1.2/1.5/2.0
HD/GI	CTI/CTP	B45	300	100/ 75 /50 / 25	1.2/1.5/2.0
HD/GI	CTI/CTP	B45	400	100/ 75 /50 / 25	1.5/2.0
HD/GI	CTI/CTP	B45	450	100/ 75 /50 / 25	1.5/2.0
HD/GI	CTI/CTP	B45	500	100/ 75 /50 / 25	1.5/2.0
HD/GI	CTI/CTP	B45	600	100/ 75 /50 / 25	1.5/2.0
HD/GI	CTI/CTP	B45	750	100/ 75 /50 / 25	2.00
HD/GI	CTI/CTP	B45	800	100/ 75 /50 / 25	2.00
HD/GI	CTI/CTP	B45	900	100/ 75 /50 / 25	2.00
HD/GI	CTI/CTP	B45	1050	100/ 75 /50 / 25	2.00
HD/GI	CTI/CTP	B45	1200	100/ 75 /50 / 25	2.00



### Remarks

- \* Thickness is minimum recommended as per manufacturing standard.
- \* Heights available are standard; other heights are available as special request.
- \* Standard Couplers size is 180mm x side height of Tray.
- \* Standard Hardware M6 Bolts for Cable Tray with M6 Nuts and Washer.
- \* Model represents the inside flange type. Other flanges available upon request.





## Reducer Straight

COATING	TRAY TYPE	ACCESSORY	WIDTH	DEPTH	SHEET THICKNESS
HD/GI	CTI/CTP	RS	50	50 / 25	1.0/1.2/1.5/2.0
HD/GI	CTI/CTP	RS	75	75 /50 / 25	1.0/1.2/1.5/2.0
HD/GI	CTI/CTP	RS	100	100/ 75 /50 / 25	1.0/1.2/1.5/2.0
HD/GI	CTI/CTP	RS	150	100/ 75 /50 / 25	1.0/1.2/1.5/2.0
HD/GI	CTI/CTP	RS	200	100/ 75 /50 / 25	1.0/1.2/1.5/2.0
HD/GI	CTI/CTP	RS	225	100/ 75 /50 / 25	1.2/1.5/2.0
HD/GI	CTI/CTP	RS	250	100/ 75 /50 / 25	1.2/1.5/2.0
HD/GI	CTI/CTP	RS	300	100/ 75 /50 / 25	1.2/1.5/2.0
HD/GI	CTI/CTP	RS	400	100/ 75 /50 / 25	1.5/2.0
HD/GI	CTI/CTP	RS	450	100/ 75 /50 / 25	1.5/2.0
HD/GI	CTI/CTP	RS	500	100/ 75 /50 / 25	1.5/2.0
HD/GI	CTI/CTP	RS	600	100/ 75 /50 / 25	1.5/2.0
HD/GI	CTI/CTP	RS	750	100/ 75 /50 / 25	2.00
HD/GI	CTI/CTP	RS	800	100/ 75 /50 / 25	2.00
HD/GI	CTI/CTP	RS	900	100/ 75 /50 / 25	2.00
HD/GI	CTI/CTP	RS	1050	100/ 75 /50 / 25	2.00
HD/GI	CTI/CTP	RS	1200	100/ 75 /50 / 25	2.00



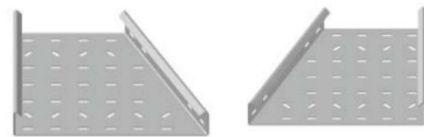
### Remarks

- \* Thickness is minimum recommended as per manufacturing standard.
- \* Heights available are standard; other heights are available as special request.
- \* Standard Couplers size is 180mm x side height of Tray.
- \* Standard Hardware M6 Bolts for Cable Tray with M6 Nuts and Washer.
- \* Model represents the inside flange type. Other flanges available upon request.



## Reducer LEFT/RIGHT

COATING	TRAY TYPE	ACCESSORY	WIDTH	DEPTH	SHEET THICKNESS
HD/GI	CTI/CTP	RR/RL	50	50 / 25	1.0/1.2/1.5/2.0
HD/GI	CTI/CTP	RR/RL	75	75 /50 / 25	1.0/1.2/1.5/2.0
HD/GI	CTI/CTP	RR/RL	100	100/ 75 /50 / 25	1.0/1.2/1.5/2.0
HD/GI	CTI/CTP	RR/RL	150	100/ 75 /50 / 25	1.0/1.2/1.5/2.0
HD/GI	CTI/CTP	RR/RL	200	100/ 75 /50 / 25	1.0/1.2/1.5/2.0
HD/GI	CTI/CTP	RR/RL	225	100/ 75 /50 / 25	1.2/1.5/2.0
HD/GI	CTI/CTP	RR/RL	250	100/ 75 /50 / 25	1.2/1.5/2.0
HD/GI	CTI/CTP	RR/RL	300	100/ 75 /50 / 25	1.2/1.5/2.0
HD/GI	CTI/CTP	RR/RL	400	100/ 75 /50 / 25	1.5/2.0
HD/GI	CTI/CTP	RR/RL	450	100/ 75 /50 / 25	1.5/2.0
HD/GI	CTI/CTP	RR/RL	500	100/ 75 /50 / 25	1.5/2.0
HD/GI	CTI/CTP	RR/RL	600	100/ 75 /50 / 25	1.5/2.0
HD/GI	CTI/CTP	RR/RL	750	100/ 75 /50 / 25	2.00
HD/GI	CTI/CTP	RR/RL	800	100/ 75 /50 / 25	2.00
HD/GI	CTI/CTP	RR/RL	900	100/ 75 /50 / 25	2.00
HD/GI	CTI/CTP	RR/RL	1050	100/ 75 /50 / 25	2.00
HD/GI	CTI/CTP	RR/RL	1200	100/ 75 /50 / 25	2.00



### Remarks

- \* Thickness is minimum recommended as per manufacturing standard.
- \* Heights available are standard; other heights are available as special request.
- \* Standard Couplers size is 180mm x side height of Tray.
- \* Standard Hardware M6 Bolts for Cable Tray with M6 Nuts and Washer.
- \* Model represents the inside flange type. Other flanges available upon request.



## External Riser

COATING	TRAY TYPE	ACCESSORY	WIDTH	DEPTH	SHEET THICKNESS
HD/GI	CTI/CTP	ER	50	50 / 25	1.0/1.2/1.5/2.0
HD/GI	CTI/CTP	ER	75	75 / 50 / 25	1.0/1.2/1.5/2.0
HD/GI	CTI/CTP	ER	100	100/ 75 / 50 / 25	1.0/1.2/1.5/2.0
HD/GI	CTI/CTP	ER	150	100/ 75 / 50 / 25	1.0/1.2/1.5/2.0
HD/GI	CTI/CTP	ER	200	100/ 75 / 50 / 25	1.0/1.2/1.5/2.0
HD/GI	CTI/CTP	ER	225	100/ 75 / 50 / 25	1.2/1.5/2.0
HD/GI	CTI/CTP	ER	250	100/ 75 / 50 / 25	1.2/1.5/2.0
HD/GI	CTI/CTP	ER	300	100/ 75 / 50 / 25	1.2/1.5/2.0
HD/GI	CTI/CTP	ER	400	100/ 75 / 50 / 25	1.5/2.0
HD/GI	CTI/CTP	ER	450	100/ 75 / 50 / 25	1.5/2.0
HD/GI	CTI/CTP	ER	500	100/ 75 / 50 / 25	1.5/2.0
HD/GI	CTI/CTP	ER	600	100/ 75 / 50 / 25	1.5/2.0
HD/GI	CTI/CTP	ER	750	100/ 75 / 50 / 25	2.00
HD/GI	CTI/CTP	ER	800	100/ 75 / 50 / 25	2.00
HD/GI	CTI/CTP	ER	900	100/ 75 / 50 / 25	2.00
HD/GI	CTI/CTP	ER	1050	100/ 75 / 50 / 25	2.00
HD/GI	CTI/CTP	ER	1200	100/ 75 / 50 / 25	2.00



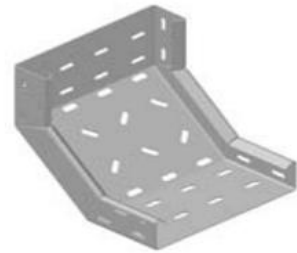
### Remarks

- \* Thickness is minimum recommended as per manufacturing standard.
- \* Heights available are standard; other heights are available as special request.
- \* Standard Couplers size is 180mm x side height of Tray.
- \* Standard Hardware M6 Bolts for Cable Tray with M6 Nuts and Washer.
- \* Model represents the inside flange type. Other flanges available upon request.



## Internal Riser

COATING	TRAY TYPE	ACCESSORY	WIDTH	DEPTH	SHEET THICKNESS
HD/GI	CTI/CTP	IR	50	50 / 25	1.0/1.2/1.5/2.0
HD/GI	CTI/CTP	IR	75	75 / 50 / 25	1.0/1.2/1.5/2.0
HD/GI	CTI/CTP	IR	100	100/ 75 / 50 / 25	1.0/1.2/1.5/2.0
HD/GI	CTI/CTP	IR	150	100/ 75 / 50 / 25	1.0/1.2/1.5/2.0
HD/GI	CTI/CTP	IR	200	100/ 75 / 50 / 25	1.0/1.2/1.5/2.0
HD/GI	CTI/CTP	IR	225	100/ 75 / 50 / 25	1.2/1.5/2.0
HD/GI	CTI/CTP	IR	250	100/ 75 / 50 / 25	1.2/1.5/2.0
HD/GI	CTI/CTP	IR	300	100/ 75 / 50 / 25	1.2/1.5/2.0
HD/GI	CTI/CTP	IR	400	100/ 75 / 50 / 25	1.5/2.0
HD/GI	CTI/CTP	IR	450	100/ 75 / 50 / 25	1.5/2.0
HD/GI	CTI/CTP	IR	500	100/ 75 / 50 / 25	1.5/2.0
HD/GI	CTI/CTP	IR	600	100/ 75 / 50 / 25	1.5/2.0
HD/GI	CTI/CTP	IR	750	100/ 75 / 50 / 25	2.00
HD/GI	CTI/CTP	IR	800	100/ 75 / 50 / 25	2.00
HD/GI	CTI/CTP	IR	900	100/ 75 / 50 / 25	2.00
HD/GI	CTI/CTP	IR	1050	100/ 75 / 50 / 25	2.00
HD/GI	CTI/CTP	IR	1200	100/ 75 / 50 / 25	2.00



### Remarks

- \* Thickness is minimum recommended as per manufacturing standard.
- \* Heights available are standard; other heights are available as special request.
- \* Standard Couplers size is 180mm x side height of Tray.
- \* Standard Hardware M6 Bolts for Cable Tray with M6 Nuts and Washer.
- \* Model represents the inside flange type. Other flanges available upon request.



## Cable Trunking

COATING		WIDTH	HEIGHT	SHEET THICKNESS	
GI	CTRU	50	75 / 50	1.0	2440/3000
GI	CTRU	75	75 / 50	1.0	2440/3000
GI	CTRU	100	50/100	1.2	2440/3000
GI	CTRU	150	50/100/150	1.5	2440/3000
GI	CTRU	200	50/100/150	1.5	2440/3000
GI	CTRU	225	50/100/150	1.5	2440/3000
GI	CTRU	250	50/100/150	2.0	2440/3000
GI	CTRU	300	50/100/150	2.0	2440/3000

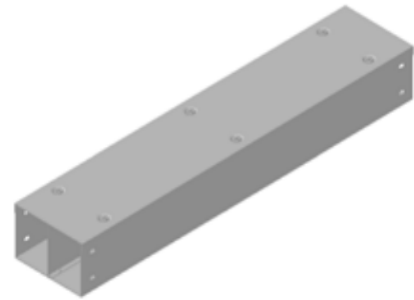
Light Duty is 1.0/1.2 mm Thickness  
Medium Duty is 1.5 mm Thickness Heavy  
Duty is 2.0/2.5 mm Thickness



## Cable Trunking Single Partition

COATING		WIDTH	HEIGHT	SHEET THICKNESS	
GI	CTRUSP	50	75 / 50	1.0	2440/3000
GI	CTRUSP	75	75 / 50	1.0	2440/3000
GI	CTRUSP	100	50/100	1.2	2440/3000
GI	CTRUSP	150	50/100/150	1.5	2440/3000
GI	CTRUSP	200	50/100/150	1.5	2440/3000
GI	CTRUSP	225	50/100/150	1.5	2440/3000
GI	CTRUSP	250	50/100/150	2.0	2440/3000
GI	CTRUSP	300	50/100/150	2.0	2440/3000

Light Duty is 1.0/1.2 mm Thickness  
Medium Duty is 1.5 mm Thickness Heavy  
Duty is 2.0/2.5 mm Thickness



## Cable Trunking Double Partition

COATING		WIDTH	HEIGHT	SHEET THICKNESS	
GI	CTRUDP	50	75 / 50	1.0	2440/3000
GI	CTRUDP	75	75 / 50	1.0	2440/3000
GI	CTRUDP	100	50/100	1.2	2440/3000
GI	CTRUDP	150	50/100/150	1.5	2440/3000
GI	CTRUDP	200	50/100/150	1.5	2440/3000
GI	CTRUDP	225	50/100/150	1.5	2440/3000
GI	CTRUDP	250	50/100/150	2.0	2440/3000
GI	CTRUDP	300	50/100/150	2.0	2440/3000

Light Duty is 1.0/1.2 mm Thickness  
Medium Duty is 1.5 mm Thickness Heavy  
Duty is 2.0/2.5 mm Thickness



### Remarks

- \* Thickness is minimum recommended as per manufacturing standard.
- \* Heights available are standard; other heights are available as special request.
- \* Standard Hardware M6 Bolts for Cable Tray with M6 Nuts and Washer.

## Cable Trunking Bend 90° Top Cover

COATING		WIDTH	HEIGHT	SHEET THICKNESS	
GI	TRU90TC	50	75 / 50	1.0	2440/3000
GI	TRU90TC	75	75 / 50	1.0	2440/3000
GI	TRU90TC	100	50/100	1.2	2440/3000
GI	TRU90TC	150	50/100/150	1.5	2440/3000
GI	TRU90TC	200	50/100/150	1.5	2440/3000
GI	TRU90TC	225	50/100/150	1.5	2440/3000
GI	TRU90TC	250	50/100/150	2.0	2440/3000
GI	TRU90TC	300	50/100/150	2.0	2440/3000

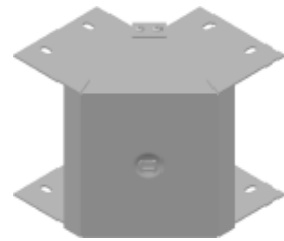
Light Duty is 1.0/1.2 mm Thickness  
Medium Duty is 1.5 mm Thickness Heavy  
Duty is 2.0/2.5 mm Thickness



## Cable Trunking Bend 90° Outside Cover

COATING		WIDTH	HEIGHT	SHEET THICKNESS	
GI	TRU90OC	50	75 / 50	1.0	2440/3000
GI	TRU90OC	75	75 / 50	1.0	2440/3000
GI	TRU90OC	100	50/100	1.2	2440/3000
GI	TRU90OC	150	50/100/150	1.5	2440/3000
GI	TRU90OC	200	50/100/150	1.5	2440/3000
GI	TRU90OC	225	50/100/150	1.5	2440/3000
GI	TRU90OC	250	50/100/150	2.0	2440/3000
GI	TRU90OC	300	50/100/150	2.0	2440/3000

Light Duty is 1.0/1.2 mm Thickness  
Medium Duty is 1.5 mm Thickness Heavy  
Duty is 2.0/2.5 mm Thickness



## Cable Trunking Bend 45° Top Cover

COATING		WIDTH	HEIGHT	SHEET THICKNESS	
GI	TRU45TC	50	75 / 50	1.0	2440/3000
GI	TRU45TC	75	75 / 50	1.0	2440/3000
GI	TRU45TC	100	50/100	1.2	2440/3000
GI	TRU45TC	150	50/100/150	1.5	2440/3000
GI	TRU45TC	200	50/100/150	1.5	2440/3000
GI	TRU45TC	225	50/100/150	1.5	2440/3000
GI	TRU45TC	250	50/100/150	2.0	2440/3000
GI	TRU45TC	300	50/100/150	2.0	2440/3000

Light Duty is 1.0/1.2 mm Thickness  
Medium Duty is 1.5 mm Thickness Heavy  
Duty is 2.0/2.5 mm Thickness



## Cable Trunking Bend 45° Outside Cover

COATING		WIDTH	HEIGHT	SHEET THICKNESS	
GI	TRU45TC	50	75 / 50	1.0	2440/3000
GI	TRU45TC	75	75 / 50	1.0	2440/3000
GI	TRU45TC	100	50/100	1.2	2440/3000
GI	TRU45TC	150	50/100/150	1.5	2440/3000
GI	TRU45TC	200	50/100/150	1.5	2440/3000
GI	TRU45TC	225	50/100/150	1.5	2440/3000
GI	TRU45TC	250	50/100/150	2.0	2440/3000
GI	TRU45TC	300	50/100/150	2.0	2440/3000

Light duty is 1.0/1.2 mm Thickness  
Medium Duty is 1.5 mm Thickness Heavy  
Duty is 2.0/2.5 mm Thickness



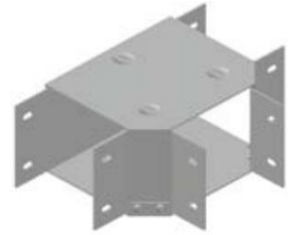
### Remarks

- \* Thickness is minimum recommended as per manufacturing standard.
- \* Heights available are standard; other heights are available as special request.
- \* Standard Hardware M6 Bolts for Cable Tray with M6 Nuts and Washer.

## Cable Trunking Tee Top Cover

COATING		WIDTH	HEIGHT	SHEET THICKNESS	
GI	TRUTTC	50	75 / 50	1.0	2440/3000
GI	TRUTTC	75	75 / 50	1.0	2440/3000
GI	TRUTTC	100	50/100	1.2	2440/3000
GI	TRUTTC	150	50/100/150	1.5	2440/3000
GI	TRUTTC	200	50/100/150	1.5	2440/3000
GI	TRUTTC	225	50/100/150	1.5	2440/3000
GI	TRUTTC	250	50/100/150	2.0	2440/3000
GI	TRUTTC	300	50/100/150	2.0	2440/3000

Light Duty is 1.0/1.2 mm Thickness  
Medium Duty is 1.5 mm Thickness Heavy  
Duty is 2.0/2.5 mm Thickness



## Cable Trunking Tee Outside Cover

COATING		WIDTH	HEIGHT	SHEET THICKNESS	
GI	TRUROC	50	75 / 50	1.0	2440/3000
GI	TRUROC	75	75 / 50	1.0	2440/3000
GI	TRUROC	100	50/100	1.2	2440/3000
GI	TRUROC	150	50/100/150	1.5	2440/3000
GI	TRUROC	200	50/100/150	1.5	2440/3000
GI	TRUROC	225	50/100/150	1.5	2440/3000
GI	TRUROC	250	50/100/150	2.0	2440/3000
GI	TRUROC	300	50/100/150	2.0	2440/3000

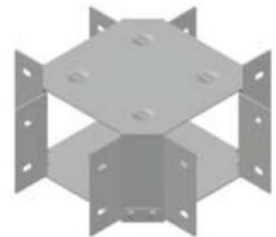
Light Duty is 1.0/1.2 mm Thickness  
Medium Duty is 1.5 mm Thickness Heavy  
Duty is 2.0/2.5 mm Thickness



## Cable Trunking Cross Outside Cover

COATING		WIDTH	HEIGHT	SHEET THICKNESS	
GI	TRUCOC	50	75 / 50	1.0	2440/3000
GI	TRUCOC	75	75 / 50	1.0	2440/3000
GI	TRUCOC	100	50/100	1.2	2440/3000
GI	TRUCOC	150	50/100/150	1.5	2440/3000
GI	TRUCOC	200	50/100/150	1.5	2440/3000
GI	TRUCOC	225	50/100/150	1.5	2440/3000
GI	TRUCOC	250	50/100/150	2.0	2440/3000
GI	TRUCOC	300	50/100/150	2.0	2440/3000

Light Duty is 1.0/1.2 mm Thickness  
Medium Duty is 1.5 mm Thickness Heavy  
Duty is 2.0/2.5 mm Thickness



## Cable Trunking Reducer Straight

COATING		A	B	HEIGHT	THICKNESS	
GI	TRURS	50	50	50	1.0	2440/3000
GI	TRURS	75	75	75 / 50	1.0	2440/3000
GI	TRURS	100	100	50/100	1.2	2440/3000
GI	TRURS	150	150	50/100/150	1.5	2440/3000
GI	TRURS	200	200	50/100/150	1.5	2440/3000
GI	TRURS	225	225	50/100/150	1.5	2440/3000
GI	TRURS	250	250	50/100/150	2.0	2440/3000
GI	TRURS	300	300	50/100/150	2.0	2440/3000

Light Duty is 1.0/1.2 mm Thickness  
Medium Duty is 1.5 mm Thickness  
Heavy Duty is 2.0/2.5 mm Thickness



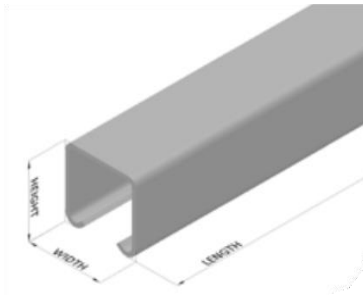
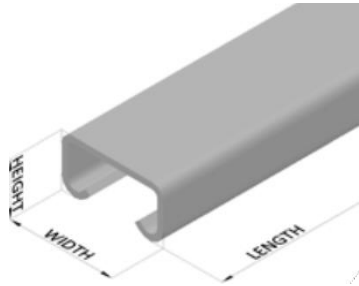
### Remarks

- \* Thickness is minimum recommended as per manufacturing standard.
- \* Heights available are standard; other heights are available as special request.
- \* Standard Hardware M6 Bolts for Cable Tray with M6 Nuts and Washer.

## Support Channel (Unistrut) Plain

COATING		HEIGHT	WIDTH	THICKNESS	
GI	SCUC	21	41	1.2	2440/3000
GI	SCUC	21	41	1.5	2440/3000
GI	SCUC	21	41	2.0	2440/3000
GI	SCUC	41	41	1.2	2440/3000
GI	SCUC	41	41	1.5	2440/3000
GI	SCUC	41	41	2.0	2440/3000

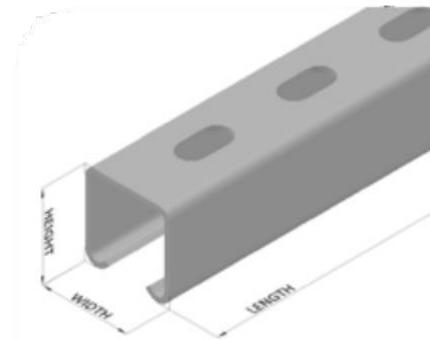
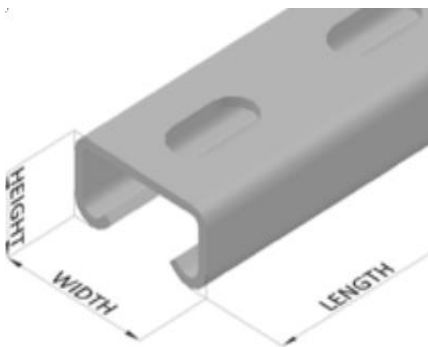
Light Duty is 1.0/1.2 mm  
Thickness Medium Duty is 1.5 mm  
Thickness Heavy Duty is 2.0/2.5 mm  
Thickness



## Support Channel (Unistrut) Slotted (10x30)

COATING		HEIGHT	WIDTH	THICKNESS	
GI	SCUC	21	41	1.2	2440/3000
GI	SCUC	21	41	1.5	2440/3000
GI	SCUC	21	41	2.0	2440/3000
GI	SCUC	41	41	1.2	2440/3000
GI	SCUC	41	41	1.5	2440/3000
GI	SCUC	41	41	2.0	2440/3000

Light Duty is 1.0/1.2 mm  
Thickness Medium Duty is 1.5 mm  
Thickness Heavy Duty is 2.0/2.5 mm  
Thickness





5340/6.910/1486 /19/jb/190338  
September 19<sup>th</sup>, 2019

FAX

Techno Electro Power Industries S.P.C.,  
Attn: Mr. Bibin Bhasi, Managing Director

Fax: 17 412845

Dear Sir,

**SUBJECT: EQUIPMENTS APPROVAL  
CABLE TRAY & TRUNKING  
MAKE: TECHNO ELECTRO POWER INDUSTRIES S.P.C, BAHRAIN**

**Name of the Project: General**

This refers to your reply mail dated 14<sup>th</sup> September 2019 along with test report. We have reviewed the same in conjunction with previous submittals and decided to approve the following items from manufacturer M/s Techno Electro Power Industries S.P.C, Bahrain:

- 1) Cable Tray ( Heavy , Medium & Light Duty), hot dip galvanized & accessories.
- 2) Cable Trunking (hot dip galvanized) & accessories

The above approval is subject to the following:-

- 1) The approval for the pertinent item is valid for five years only.
- 2) It is the responsibility of the local agent to ensure the standards and specifications of the above approved articles.
- 3) Any alteration or changes to the specifications of the above items will invalidate this approval.
- 4) This approval does not entitle the contractor to hold Electricity Distribution Directorate responsible in the event of non-performance of the item.

Regards,



**Khalid Jassim Mohamed Sowayed**  
Chief, Engineering Services

JB/jb- ES (1625 & mail on 14-09-19)  
CC: 1) MAC Members-please see sharing folder ,(2) Abdulla Hameed & (3) File

www.ewa.bh

P.O. Box: 2, Tel: (+973) 17991999, Fax: (+973) 17728466

ص.ب: ٢ - هاتف: ١٧٩٩١٩٩٩ (+٩٧٣) - فاكس: ١٧٧٢٨٤٦٦ (+٩٧٣)